



Est.1993

The Puppetry Arts Center

Museum

A 501(c)(3) nonprofit corp.

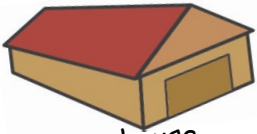
Theater

(561) 243-4330



Facility & Property options

After 20 years and eight locations and 6 build-outs (3 major)
the Center is ready for:



Warehouse

A Forever Home

Garage



SQUARE FOOTAGE OPTIONS:

Basic: theater, lobby, office-absolute minimum - 3,000 sq.ft. - plus off site storage

Basic plus: museum, gift shop, library, work area, some storage - 5,000 sq.ft.

Ideal: adding workshop & production spaces, rehearsal space, etc. - 10,000 sq.ft. or more.

TYPES OF POSSIBLE BUILDINGS:

warehouse, church, barn, any freestanding building, large house,
or . . . **Use your imagination** . . .

Keep in mind the Center has done build-outs by gutting &
rebuilding, electrical, sewer lines, bathrooms, etc.



Hummm . . .
Not really!



House

LOCATION - any place in Palm Beach County

ANY reasonably safe location. **Walk-by traffic is not needed.** The Center is a destination facility.
Industrial area, western area, (directions can get people anyplace)

DESIRABLE ADDITIONS:

Good condition (NOT required), reasonable access, parking,

COST: As reasonable as possible.
(Tax deductible donations will help.)



Any empty building

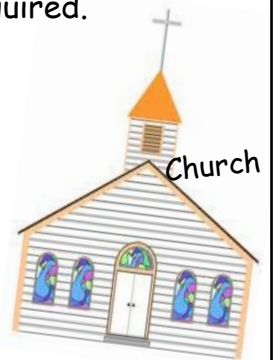
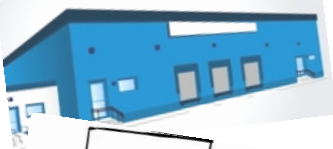


A VACANT LOT:

Steel building close-outs are VERY reasonable BUT a paid for lot is required.

*** The PAST EXPERIENCES ***

For the first 15 years in the first 6 locations
the Center presented 200 performances a year with an
attendance of 15,000 to 19,000 each year from 5 counties -
in defunct malls, bowling lane party rooms, and flea markets.



Church

IT IS TIME FOR A FOREVER HOME!

A 501(c)(3) nonprofit tax deductible corp.

Online donations: www.puppetcenter.org

Mail: Puppetry Arts Center, PO Box 19124, W. Palm Beach, 33416

www.facebook.com/puppetcenter

Information - call Jan (561) 243-4330